

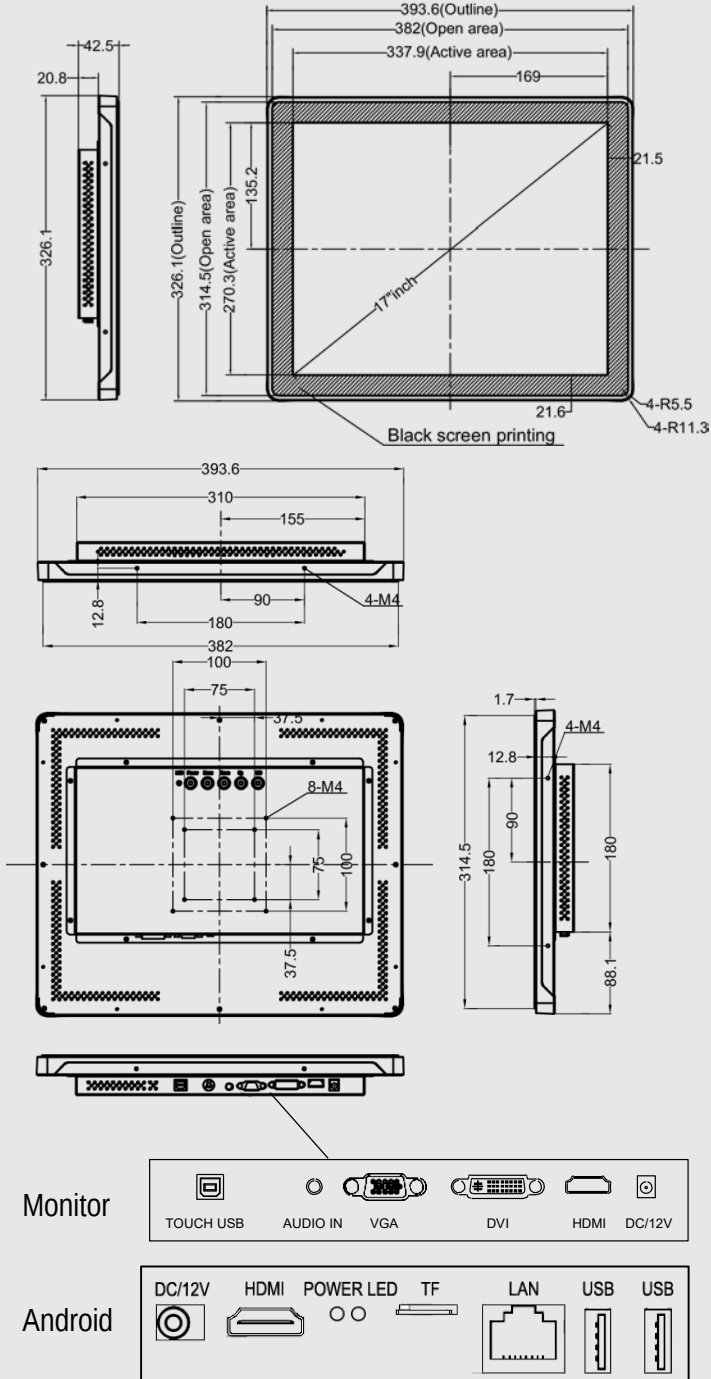


## ADVANTAGES

- ▶ Easy to Deploy
- ▶ High Definition
- ▶ Multi Platform Support
- ▶ PCT Multi-touch Film
- ▶ Flexible Installation
- ▶ Durable and Professional Embedded Design



> LCD Panel	
Backlight	LED
Brightness	250 cd/m <sup>2</sup>
Contrast Ratio	1000:1
Viewing Angle	H:170° / V:160°
Response Time	5 ms (GTG)
Supported Colors	16.7M Colors
Display Resolution	1280 x 1024 (4:3)
Display Frame Rate	60Hz
Input Resolution	1280 x 1024 @ 60Hz(Analog) 1280 x 1024 @ 60Hz(Digital)
> Touch	
Touch points	10
Touch technology	Projected Capacitive (PCT)
> Mechanical	
Dimensions	393.6 x 326.1 x 42.5 mm
Package Dimension	493 x 443.5 x 155 mm
Weight(approximately)	5 kg / 7 kg
Wall Mount Type	VESA, MIS-D,75/100,C
Connector	1x VGA /1x DVI /1x HDMI
Operation	0 °C ~ 50 °C, 90% RH
Storage	-20 °C ~ 60 °C, 90% RH
> Electrical	
Power Supply	DC in: DC 12V 5A Max
Normal Operation	≤ 20W (typ.)
Power Off	≤ 2 W (typ.)
Internal Speaker	no
> Android(Options)	
CPU	RK3188 Cortex-A9 RK3288 Cortex-A17
Memory	2GB DDR3
ROM	8GB EMMC NAND
Connector	2xUSB /1xLAN /1xHDMI / 1xTF
Options	Signage Software



**FENIX IMVICO, S.A.**  
 Pacifico, 53-55  
 08027 Barcelona  
 Phone: +34-93-3539222  
 Fax: +34-93-3539721  
 E-mail: BCN@feniximvico.com